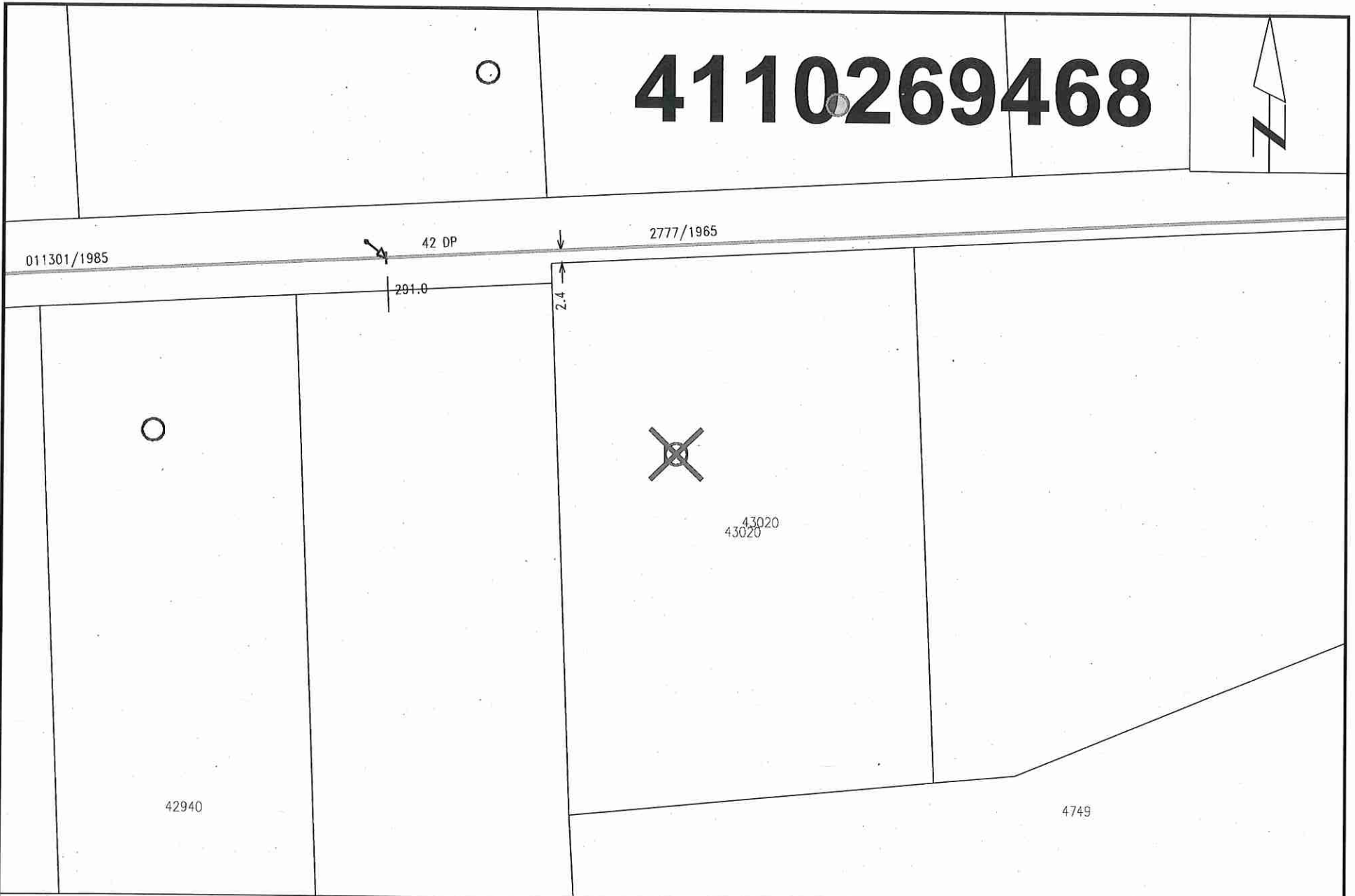
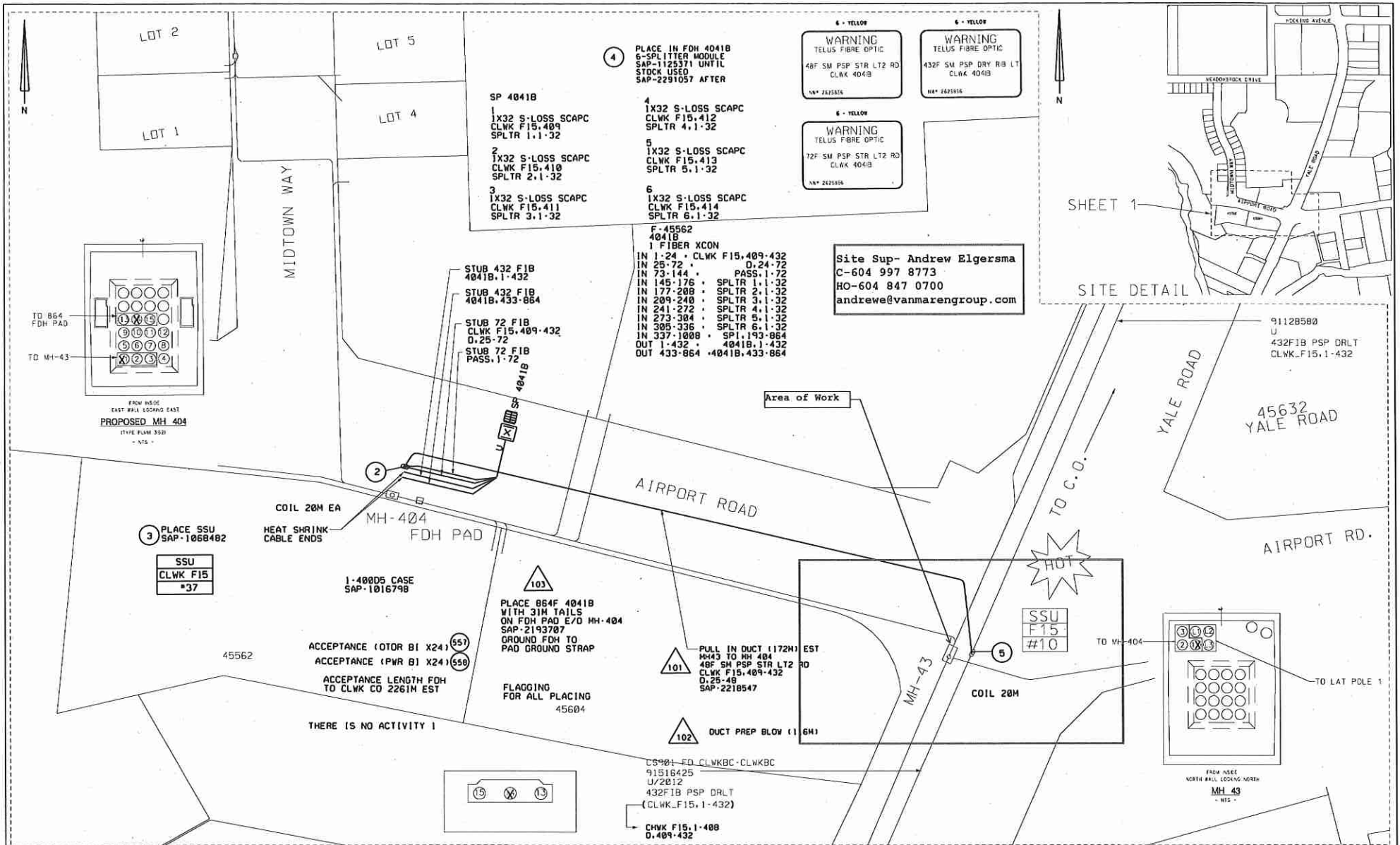


4110269468



Nearest Intersection: Lumsden Rd and Simmons Rd.
Distance from lot to intersection is 256 meters (13 degrees North of East).
View Scale: 1:1000

43020 Lumsden Rd, Chilliwack
Order #: 30942608 Prem #: 10073242 City Limits: Chilliwack
X: 1289855690.00 Y: 460631280.00
Select autotext type 2017/07/25



Site Sup- Andrew Elgersma
 C-604 997 8773
 HO-604 847 0700
 andrew@vanmarengroup.com

SHEET 1

SITE DETAIL

3 PLACE SSU
 SAP-1068402

SSU
 CLWK F15
 *37

1-40005 CASE
 SAP-1016798

ACCEPTANCE (OTOR BI X24)
 ACCEPTANCE (PWR BI X24)

ACCEPTANCE LENGTH FOM
 TO CLWK CO 2261M EST

THERE IS NO ACTIVITY I

103 PLACE 8E4F 4041B
 WITH 31M TAILS
 ON FDH PAD E/O MH-404
 SAP-2193707
 GROUND FDH TO
 PAD GROUND STRAP

FLAGGING
 FOR ALL PLACING
 45604

101 PULL IN DUCT (172M) EST
 MH43 TO MH-404
 49F SM PSP STR LT2 RD
 CLWK F15, 409-432
 D.25-48
 SAP-2218547

102 DUCT PREP BLOW (16M)

CS901-ED CLWKBC-CLWKBC
 91816425
 J42812
 432F15 PSP DRLT
 (CLWK_F15, 1-432)
 CLWK F15, 1-408
 D.409-432

4 PLACE IN FDH 4041B
 6-SPLITTER MODULE
 SAP-1125371 UNTIL
 STOCK USED
 SAP-2291057 AFTER

SP 4041B
 1 IX32 S-LOSS SCAP
 CLWK F15, 409
 SPLTR 1,1-32
 2 IX32 S-LOSS SCAP
 CLWK F15, 410
 SPLTR 2,1-32
 3 IX32 S-LOSS SCAP
 CLWK F15, 411
 SPLTR 3,1-32

4 IX32 S-LOSS SCAP
 CLWK F15, 412
 SPLTR 4,1-32
 5 IX32 S-LOSS SCAP
 CLWK F15, 413
 SPLTR 5,1-32
 6 IX32 S-LOSS SCAP
 CLWK F15, 414
 SPLTR 6,1-32

F-45562
 4041B
 1 FIBER XCON
 IN 1-24 • CLWK F15, 409-432
 IN 25-72 • D.24-72
 IN 73-144 • PASS.1-72
 IN 145-176 • SPLTR 1,1-32
 IN 177-208 • SPLTR 2,1-32
 IN 209-240 • SPLTR 3,1-32
 IN 241-272 • SPLTR 4,1-32
 IN 273-304 • SPLTR 5,1-32
 IN 305-336 • SPLTR 6,1-32
 IN 337-1008 • SPI,193-864
 OUT 1-432 • 4041B,1-432
 OUT 433-864 • 4041B,433-864

STUB 432 FIB
 4041B,1-432

STUB 432 FIB
 4041B,433-864

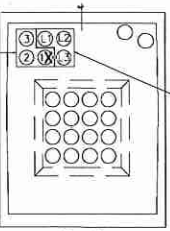
STUB 72 FIB
 CLWK F15, 409-432
 D.25-72

STUB 72 FIB
 PASS.1-72

6-YELLOW
 WARNING
 TELUS FIBRE OPTIC
 48F SM PSP STR LT2 RD
 CLWK 404B
 N# 2620316

6-YELLOW
 WARNING
 TELUS FIBRE OPTIC
 432F SM PSP DRY RB LT
 CLWK 404B
 N# 2620316

6-YELLOW
 WARNING
 TELUS FIBRE OPTIC
 72F SM PSP STR LT2 RD
 CLWK 404B
 N# 2620316



REV.	DESCRIPTION:

DESIGN: BILL CRAIG	DRY: BILL CRAIG
PH: 604-868-9859	SCALE: N.T.S.
BLL.CRAIG@TELECON.CA	DATE: 2017-01-26
ASSOCIATED DRAWINGS	
REF: 265378U-R2 263267C	

THE WORKS PROPOSED ON THIS DRAWING SHALL AT ALL TIMES REMAIN THE PROPERTY OF TELUS		
PROPOSED UNDERGROUND TELEPHONE CONSTRUCTION		
TO PLACE FIBRE FEED AND NEW 8E4 FDH 404B AT AIRPORT RD,		
100M W/O YALE RD, CHILLIWACK		
CHILLIWACK EXCHANGE		
C.O. CODE	2625856C	SYSTEM NAME:
CLWK	SHEET 1 OF 1	2625856C-I-1
TELUS		A2

TABLE A - TAPER LENGTHS										
Taper Types (m)	Regulatory Speed Limit before Work Begins (km/h)									
	≤ 50	60	70	80	90	100	110	120	130	140
Merge Taper Length	1/4	35	55	100	150	210	230	250	280	
Lane Shift Taper Length	1/4	30	50	80	100	110	120	130	140	
Downstream Taper Length	1/4	30	30	30	30	30	30	30	30	
TCF, Signal, and Shoulder Taper Length (min. S devices)	1/4	5	8	15	15	15	15	15	15	
Minimum Tangent Length between Tapers	1/4	30	60	160	190	210	230	250	280	
Run-in Length on Centreline	1/4	40	50	60	60	70	80	90	100	

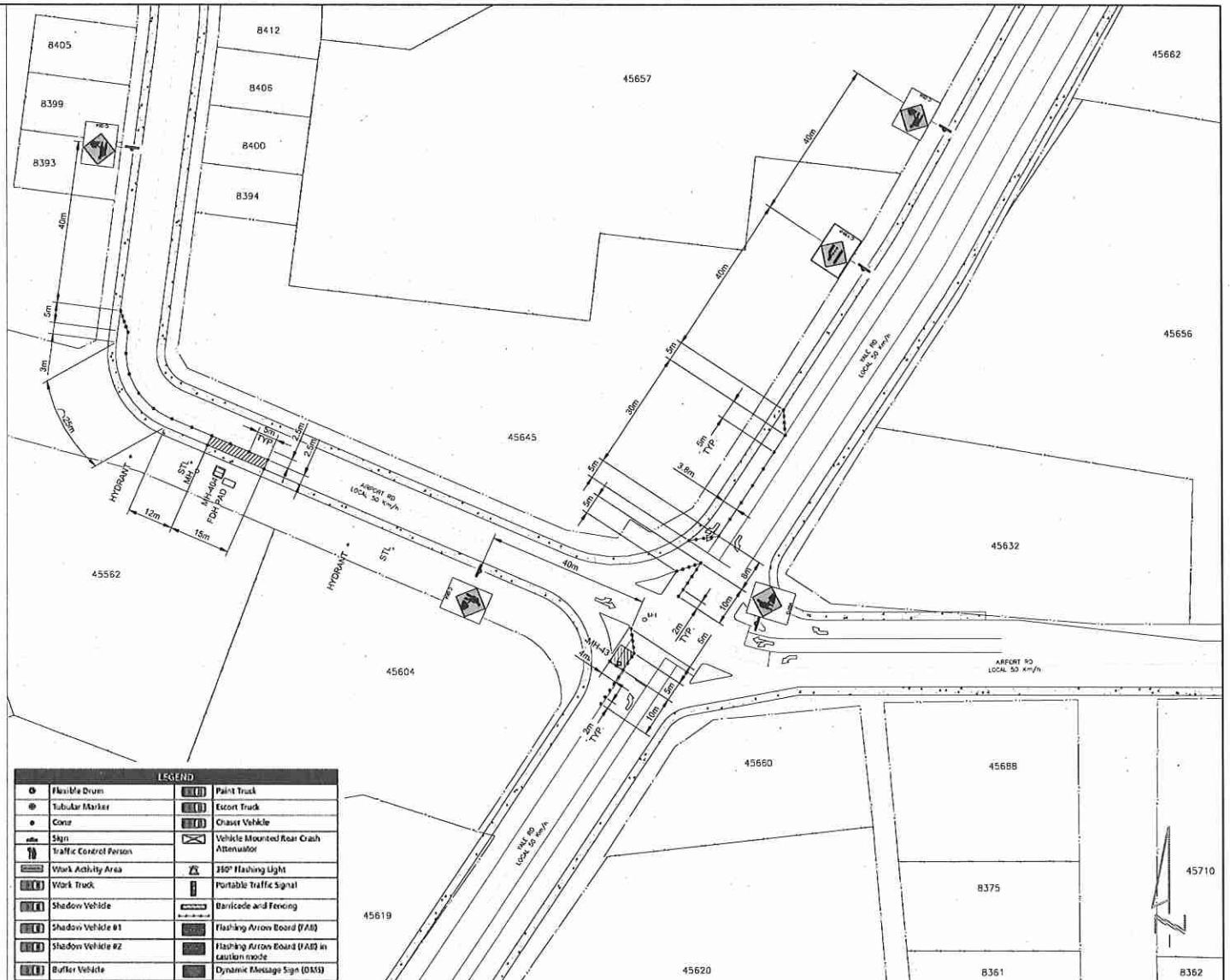
TABLE B - DEVICE SPACING LENGTHS										
Device Spacing (m)	Regulatory Speed Limit before Work Begins (km/h)									
	≤ 50	60	70	80	90	100	110	120	130	140
Construction Sign Spacing	A	40	60	80	100	150	150	200	200	
Buffer Space	B	30	40	60	60	110	140	170	200	
Channelizing Device Spacing for Tapers	C	10	10	15	15	15	15	15	15	
Channelizing Device Spacing on Curves and Tangents	D	10	10	30	30	40	40	40	50	

NOTES:

1. THE WORK REQUIRING THE TRAFFIC CONTROL MEASURE INVOLVES THE SPLICING OF FIBER OPTIC CABLE AT MH 43 LOCATED ON YALE RD (15m SOUTHWEST OF AIRPORT RD) AND AT MH-404&FDH PAD ON THE SOUTHWEST SIDE OF AIRPORT RD (112m NORTHWEST OF YALE RD) IN CHILLIWACK. THE DURATION OF USE OF THIS MEASURE WILL BE UNTIL THE WORK IS COMPLETED.
2. LANE CLOSURES ARE AS NOTED IN THIS LAYOUT.
3. TIMING OF THE WORKS WILL BE FROM 9:00AM TO 3:00 PM.
4. LOCATION OF THE WORK ZONE IS AS INDICATED ON THIS PLAN FOR CONSTRUCTION.
5. THE MEASURES SHOWN IN THIS TRAFFIC MANAGEMENT PLAN IS IN ACCORDANCE TO THE "BC TRAFFIC MANAGEMENT MANUAL FOR WORK ON ROADWAYS (2015 INTERIM)". CHANGES TO THIS LAYOUT MAY BE MADE BY THE TRAFFIC CONTROL PERSON IN CHARGE TO REFLECT FIELD CONDITIONS.
6. PRIORITY ACCESS WILL BE GIVEN TO EMERGENCY VEHICLES.
7. ALL DIMENSIONS ARE IN METRES.

CONTACT INFORMATION:

ALEC LUNDE:
C: 778-837-4642



LEGEND	
	Fluorescent Drum
	Tubular Marker
	Cone
	Sign
	Traffic Control Person
	Work Activity Area
	Work Truck
	Shadow Vehicle
	Shadow Vehicle #1
	Shadow Vehicle #2
	Buffer Vehicle
	Paint Truck
	Escort Truck
	Onset Vehicle
	Vehicle Mounted Rear Crash Attenuator
	350° Flashing Light
	Portable Traffic Signal
	Barrier and Fencing
	Flashing Arrow Board (FAB)
	Flashing Arrow Board (FAB) in caution mode
	Dynamic Message Sign (DMS)

BC ONE CALL

CALL BEFORE YOU DIG
1 800-474-6888
WAKEDOVER AREA
604-257-1949



CONSTRUCTION	PERMIT	DESIGN: DVP	DIV: EMJ	THE DEVELOPER OF THIS DRAWING SHALL AT ALL TIMES REMAIN THE PROPRIETOR OF THIS	
REV. DESCRIPTION	SUBMITTED DATE	604-529-7842	SCALE: 1:100	PROPOSED TRAFFIC CONTROL LAYOUT TO ACCOMMODATE TELECOM CABLE SPLICING	
REV. DESCRIPTION	PER-SUB DATE		DATE: 15/15/17	AT THE INTERSECTION OF AIRPORT RD & YALE RD IN CHILLIWACK	
REV. DESCRIPTION	REV-SUB DATE		ASSOCIATED DRAWINGS	SYSTEM NAME: 2025558	
REV. DESCRIPTION	APPROVED		1.	SHEET 1	
REV. DESCRIPTION	DATE		2.		
REV. DESCRIPTION	AS RESTRICTED DATE		3.		
REV. DESCRIPTION	CONTRACTOR		REF		